

Howto Setup Paclink on Your PC

This procedure will walk you through the software side of installing Winlink. You should have your hardware installed and tested prior to using this procedure.

You will do quite a bit of downloading, so to make it easier on yourself, you may want to create a temporary folder on your desktop to hold the downloaded files. I created a folder called PacketRadio.

Download and install the latest version of Microsoft .NET Framework:

<http://www.microsoft.com/downloads/details.aspx?FamilyID=262d25e3-f589-4842-8157-034d1e7cf3a3&DisplayLang=en>

Download AGW PE:

<http://www.elcom.gr/sv2agw/agwpe.zip>

Extract the ZIP to a folder of your choice. You will need to know this location when you install Paclink AGW. I unzipped to C:\Program Files\AGWPE Once you have unzipped the files, look for the file named AGWPE.exe. Right-click on the file, then select Send To, then select Desktop. This puts a shortcut on your desktop for later use.

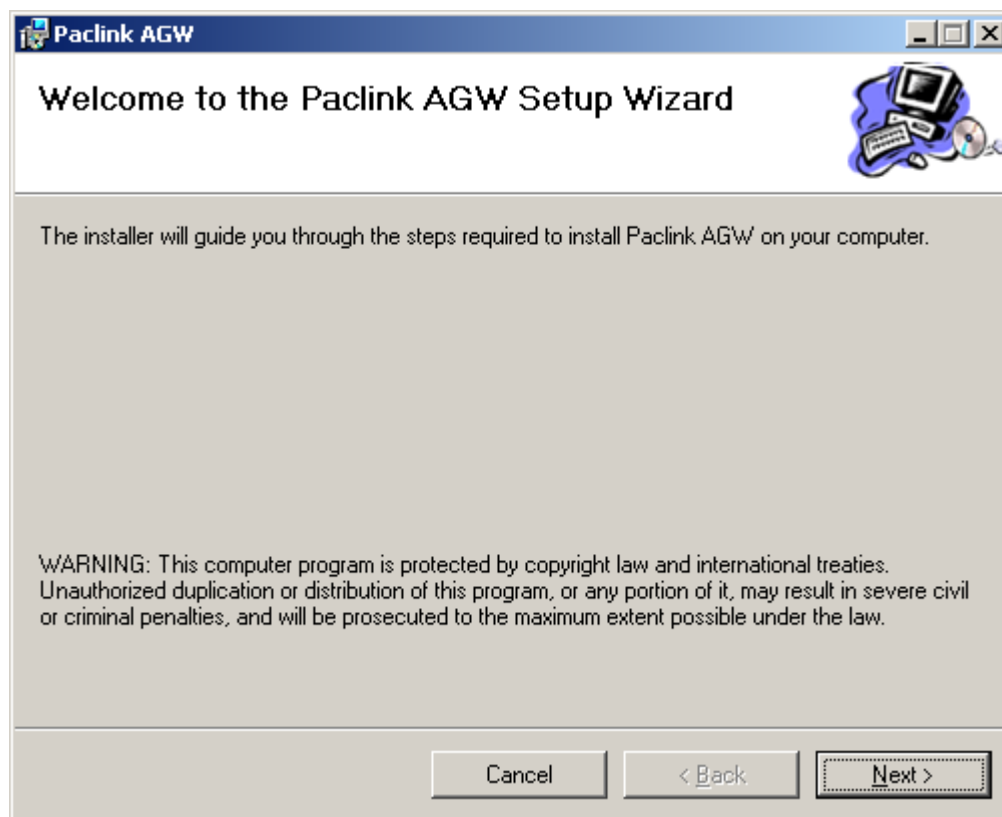
Download Paclink AGW and Paclink Postoffice:

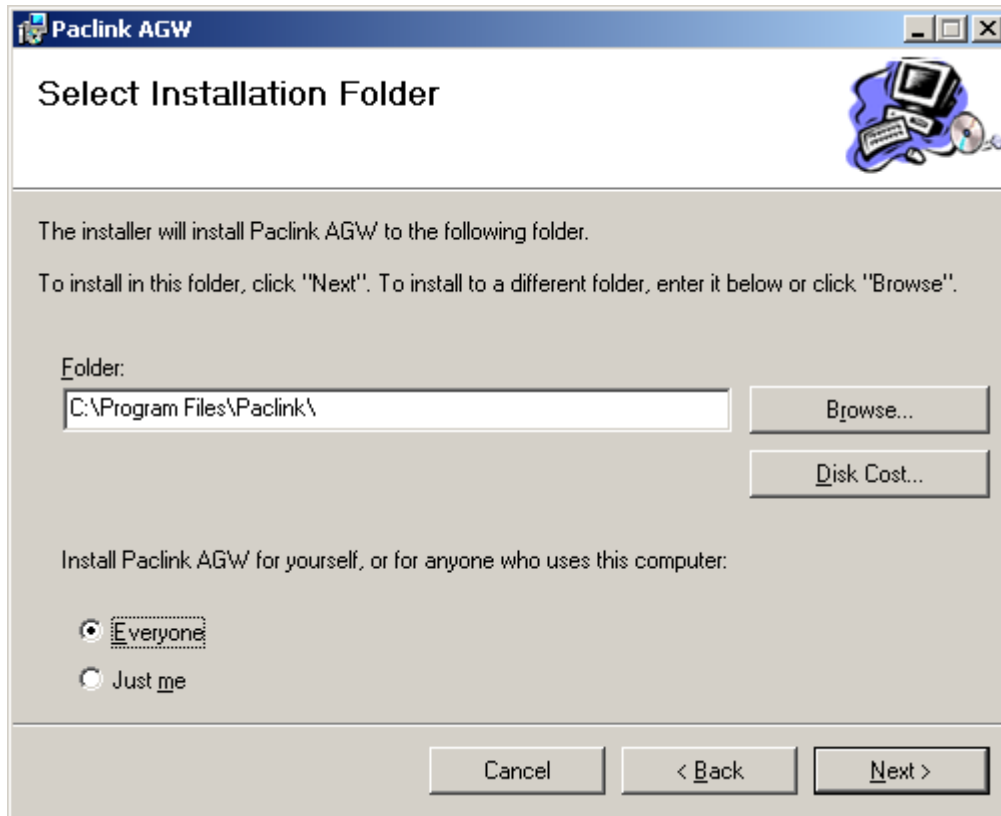
<http://winlink.org/downloads/Paclink%20AGW%20Install%201.2.9.exe>

<http://winlink.org/downloads/Paclink%20Postoffice%20Install%202.2.exe>

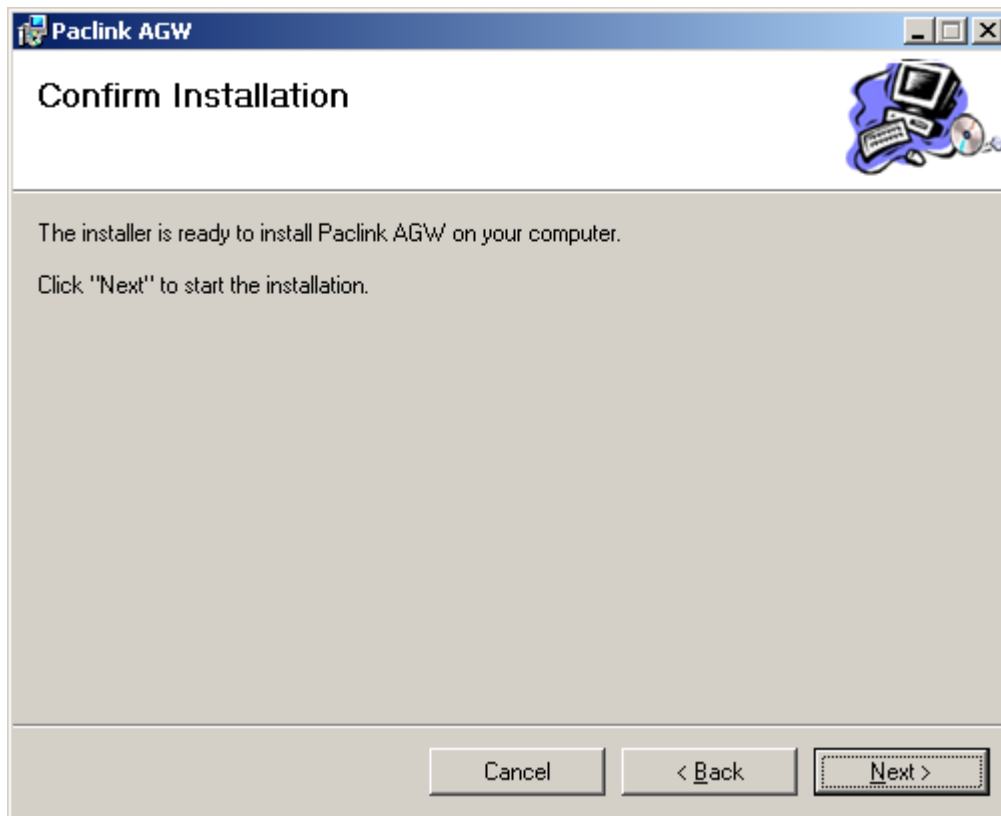
Now I don't know why the guys who packed these two files didn't make things nice and easy for us, but you will need to know where each of the 2 above "self extracting" files extracts to. I created a folder inside of the Desktop\PacketRadio for each of the files and pointed to that folder when the Self Extractor asked me where to put the files.

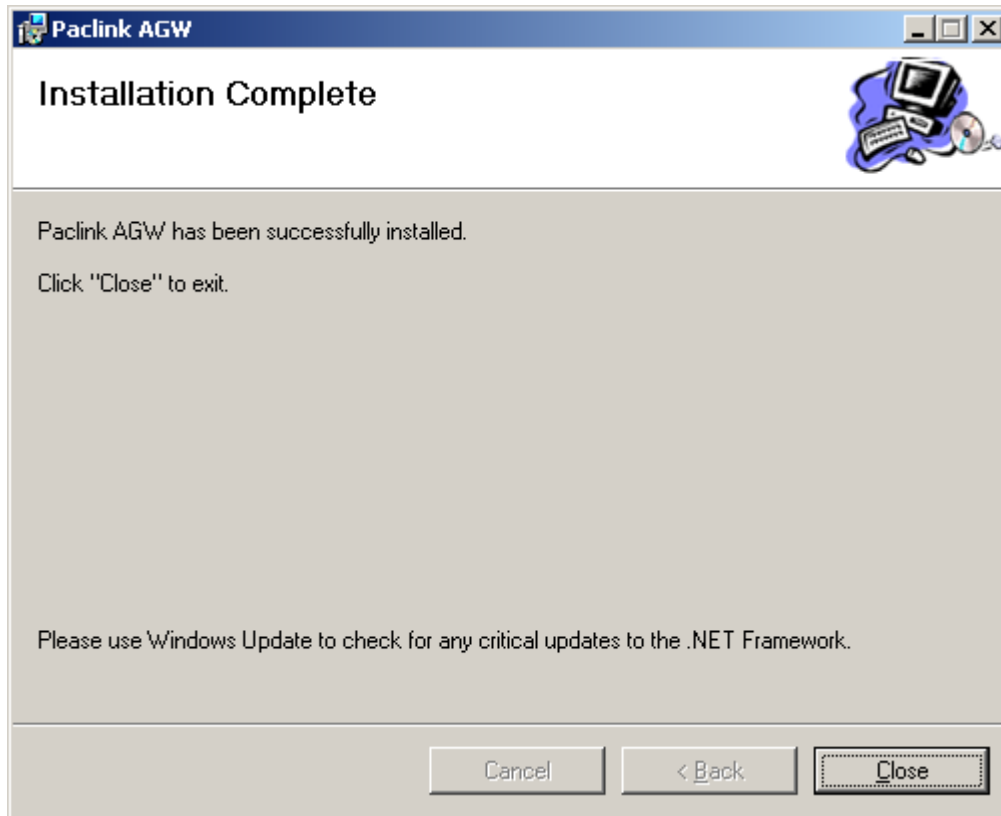
Now we can start the installation of the Paclink programs. Navigate to the folder that you extracted Paclink AGW to and doubleclick on Setup.exe then follow along with the screenshots here...



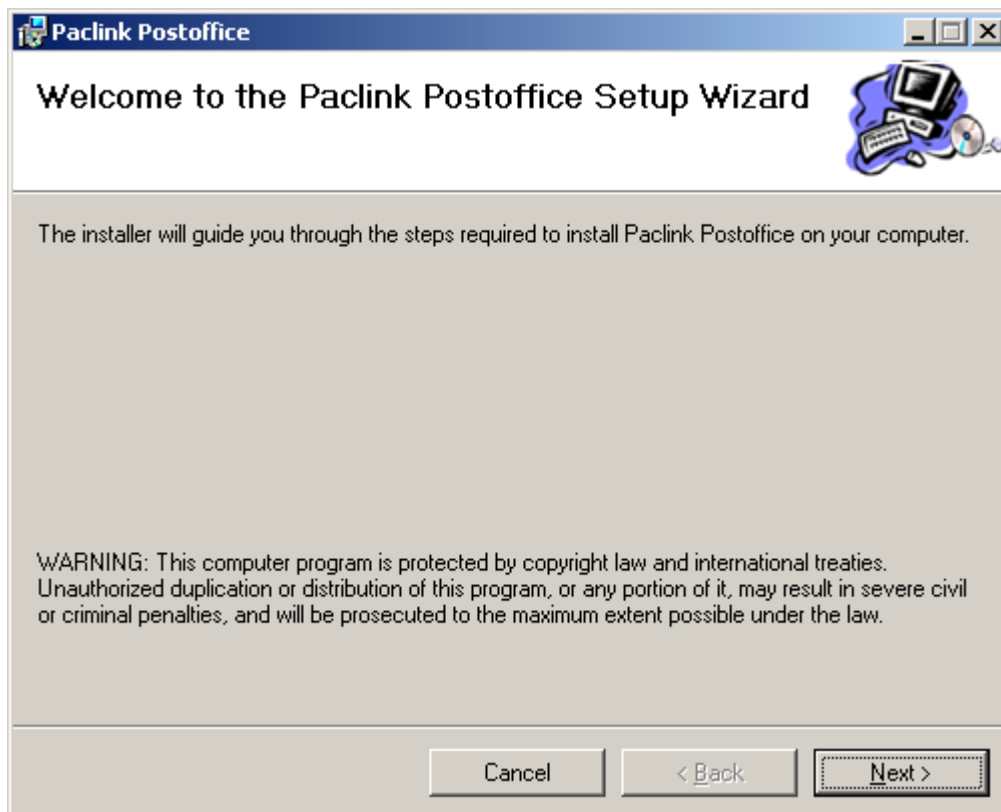


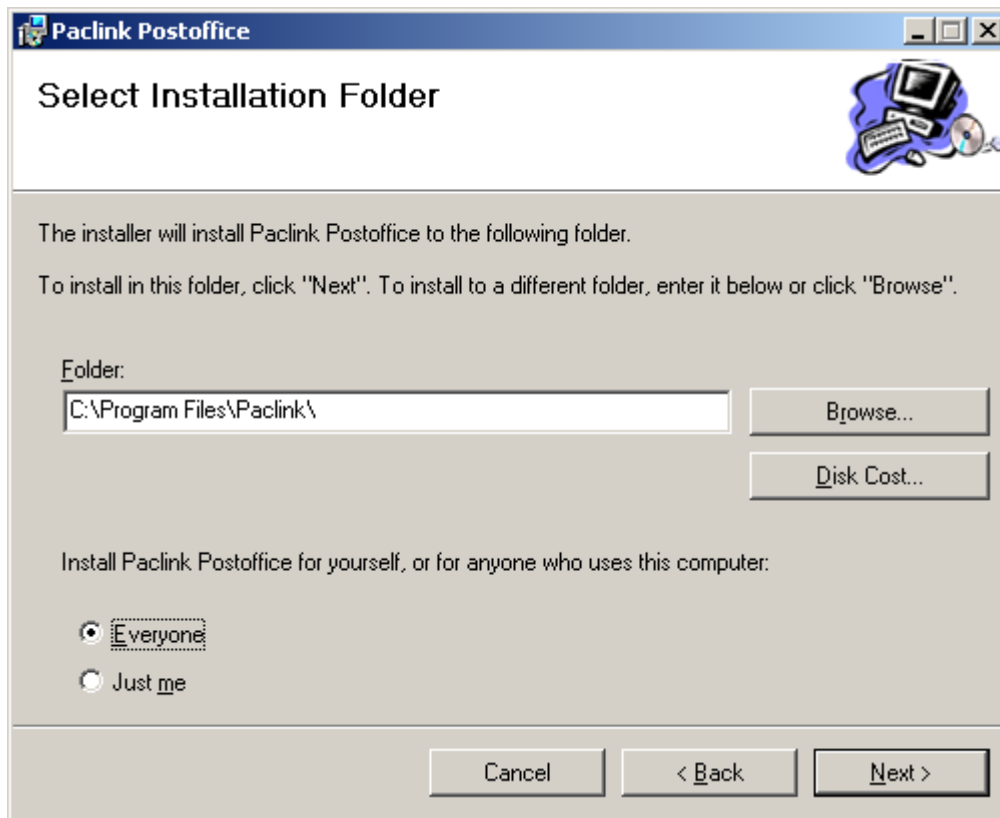
Save yourself some future head scratching time. I recommend installing Paclink AGW for everyone.



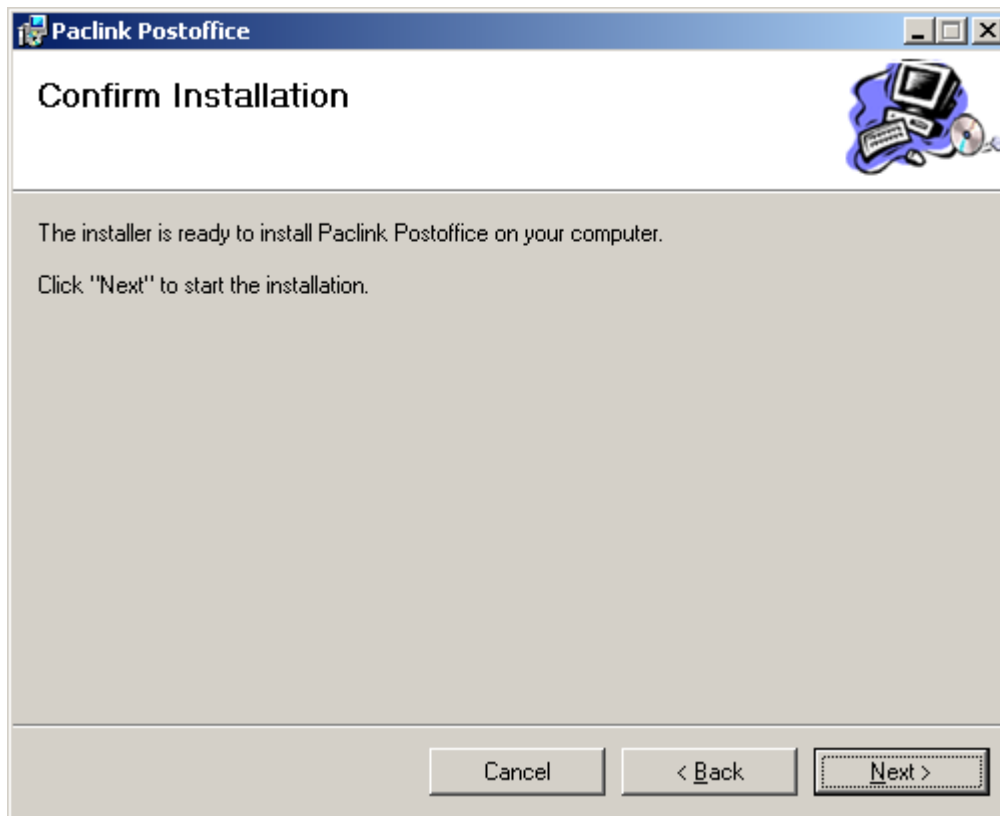


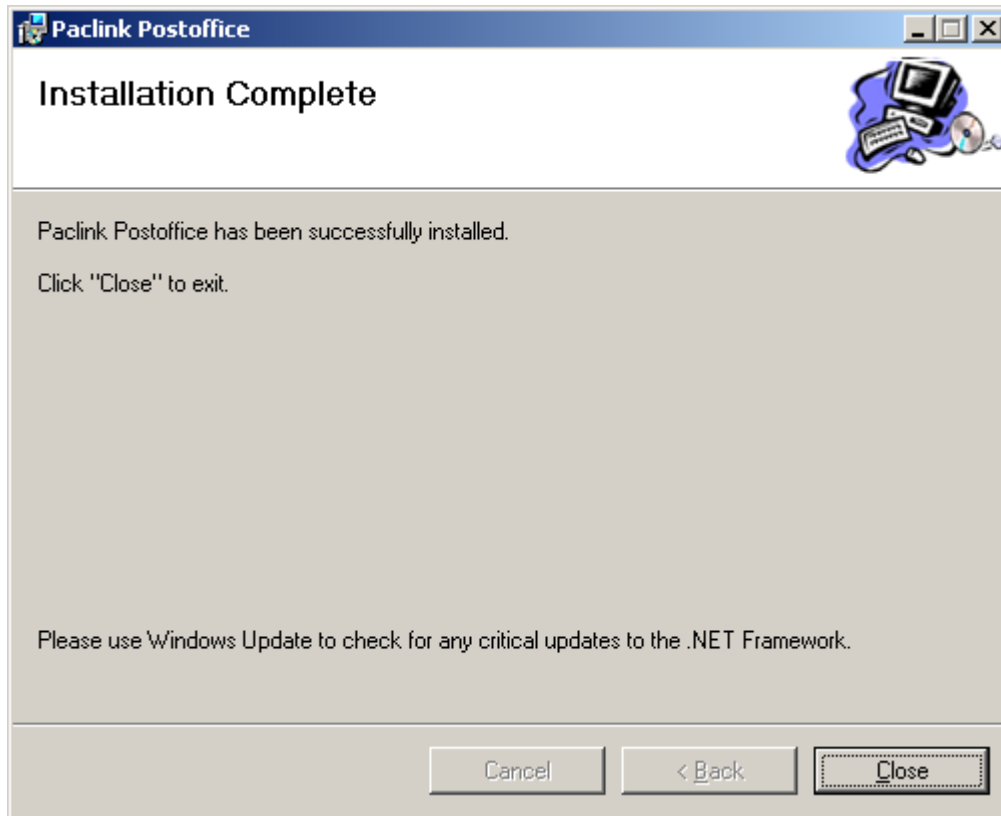
That's it! Now we are ready to install Paclink Post Office. Navigate to the folder that you extracted Paclink Postoffice to and doubleclick on Setup.exe then follow along with the screenshots here...





Save yourself some future head scratching time. I recommend installing Paclink Postoffice for everyone.



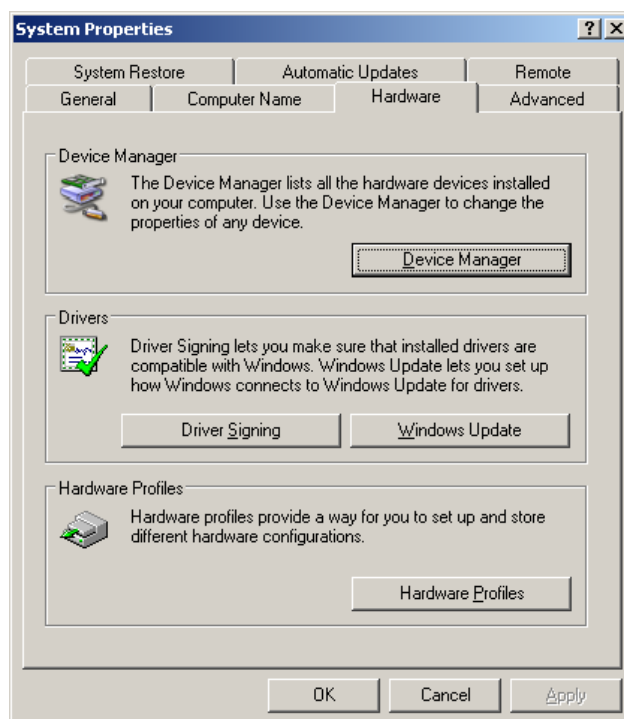


We're finished with the software installation!

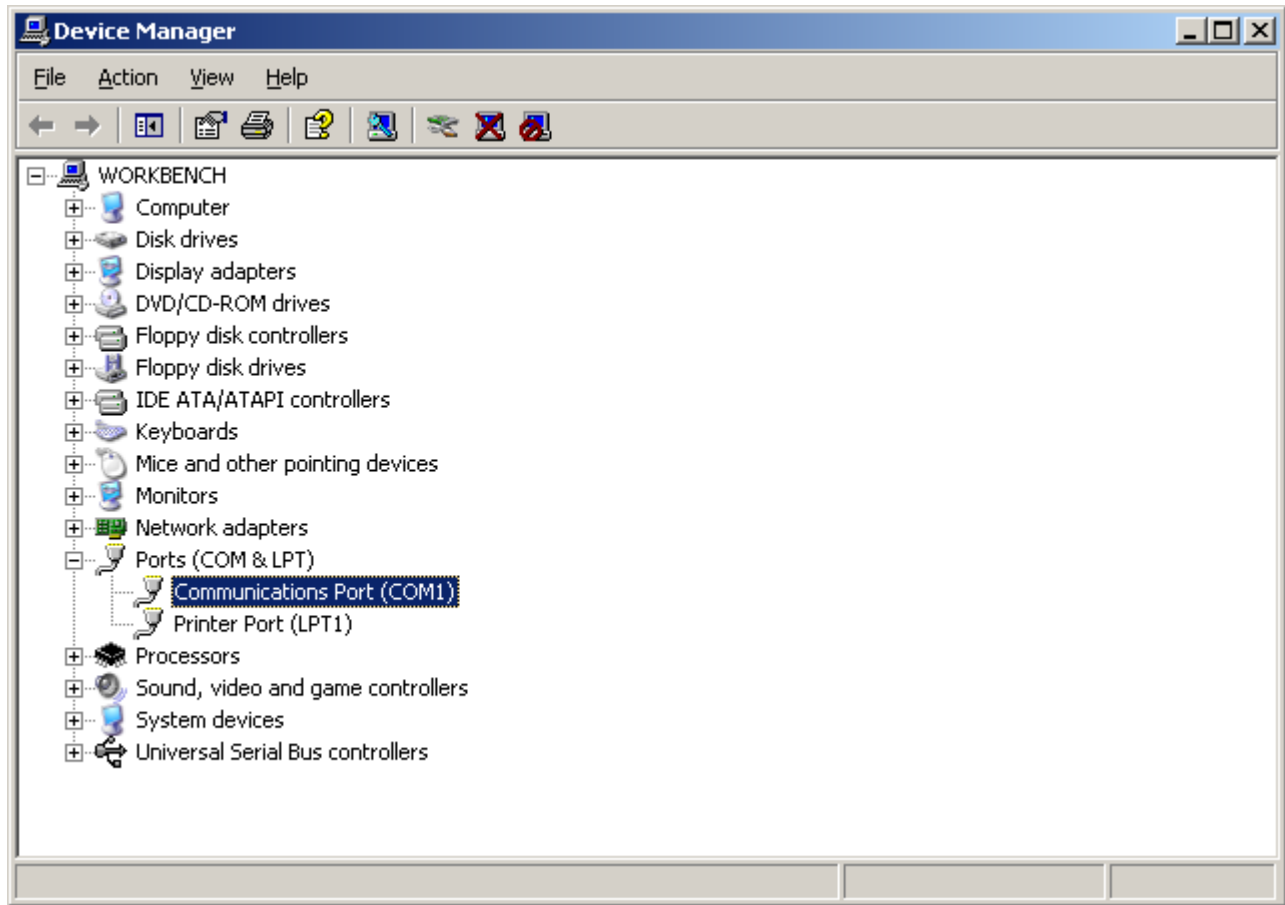
Let's move on to the configuration side of things.

Now this gets a little tricky. You need to know what serial port your TNC is attached to. If you are using a newer PC, you may not have a standard serial port and have to use a USB to Serial Converter. The easiest way I know to find out what ports are available is to go to the Device Manager. Let's do it...

Right-click on My Computer then click on Properties. (If your "My Computer" is not on your desktop, you will need to click on the Start Menu, then right-click on My Computer) Click on the Hardware tab, then click on the Device Manager Button.



Look down the list and click on the plus sign beside Ports (COM & LPT). This shows your list of available Serial and Printer Ports. If you are using a USB adapter, you should see a port listed that says USB beside it somewhere. This will be the port that you attach your TNC to.

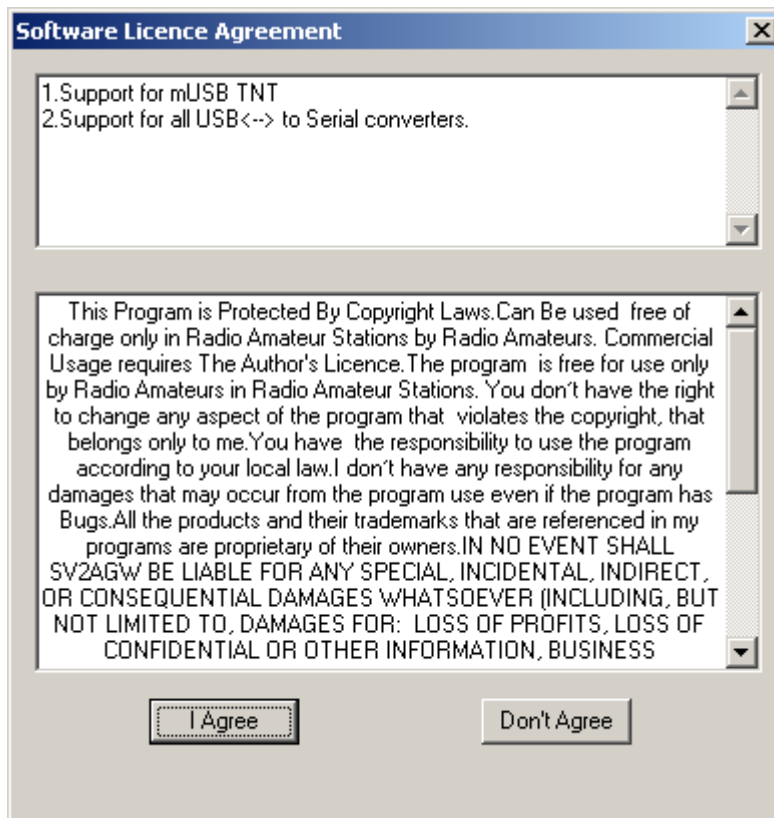


Remember what this port is.

Remember the shortcut to AGWPE that we made earlier? Find it on your desktop and double-click it.

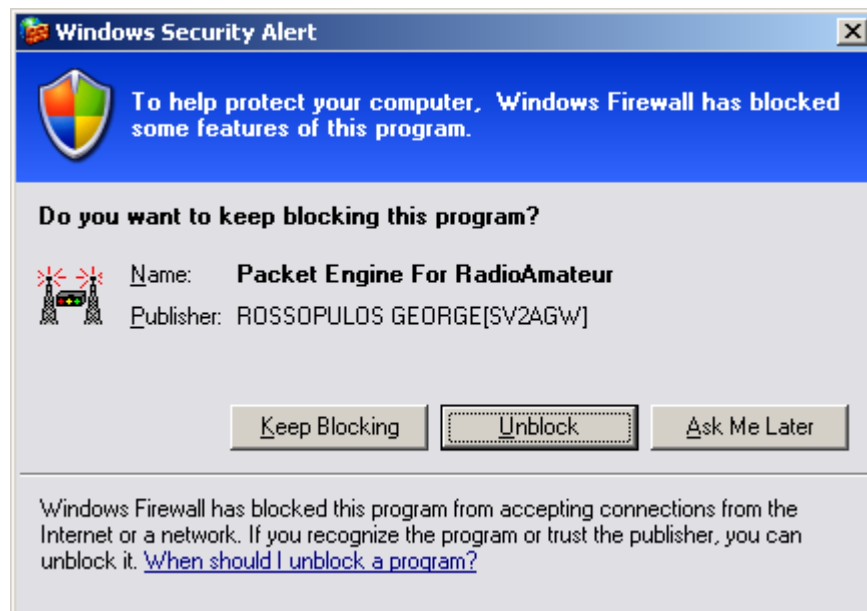
If you get a screen that looks like this, unclick the checkbox that says "Always ask before opening this file"





Read through the license. If you want to continue to use the program click on the "I Agree" button.

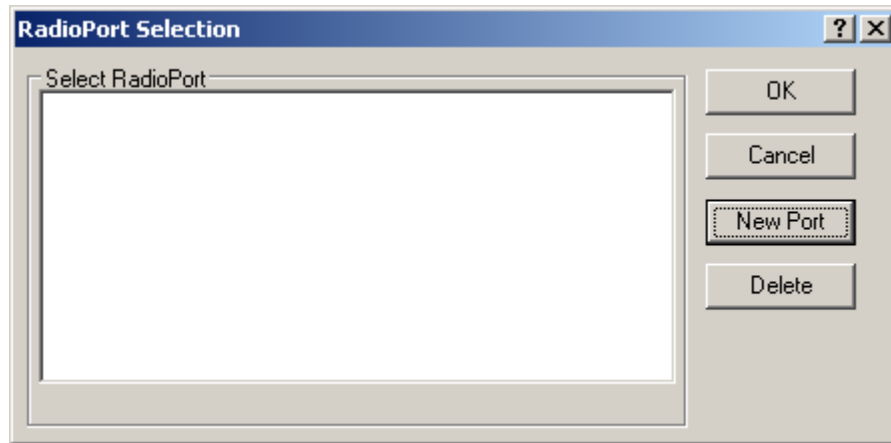
You may or may not get a warning screen from whatever firewall you are running. If you do, click on unblock or allow.



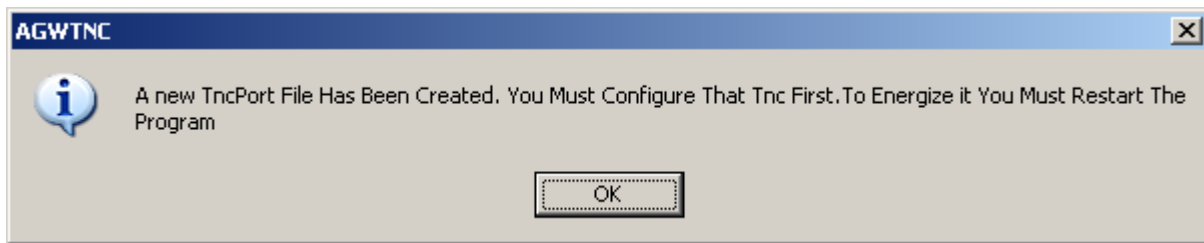
Now you should notice a new icon in your taskbar.



You will need to right-click on this icon then click properties.



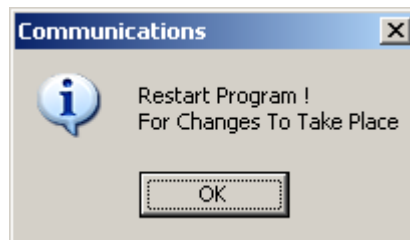
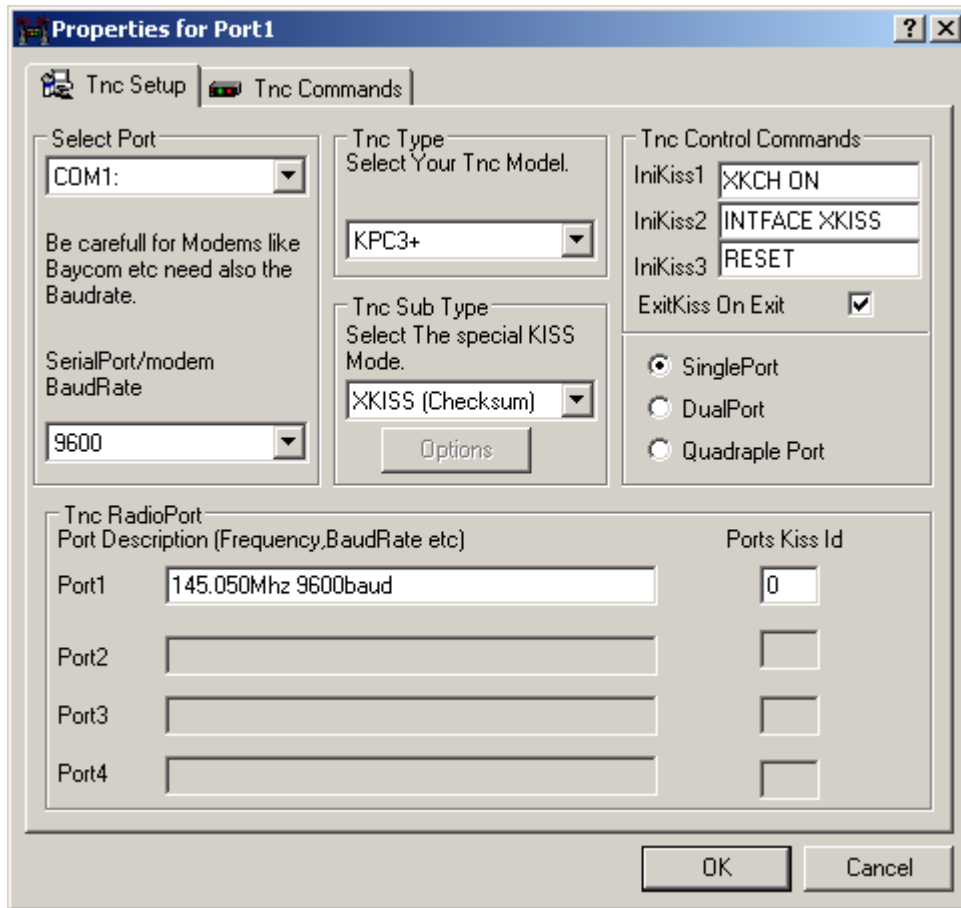
Since we don't have any ports setup yet, we will need to create a New Port.



We need to know some information in order to setup the new port.

1. What serial port will you use with your TNC (we looked at this earlier)
2. What brand and model is your TNC
3. What frequency will you be using (for Nacogdoches, Lufkin and surrounding area this will be 145.050 Mhz)

Enter this information on the following screen.

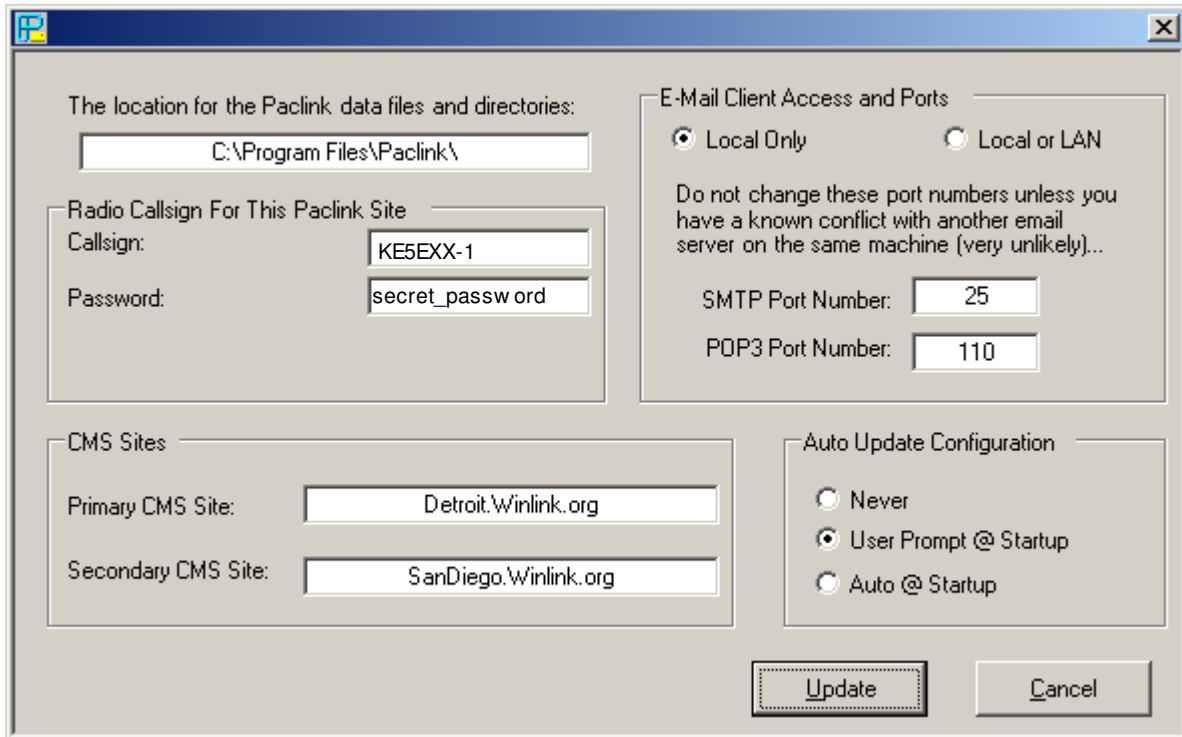


That's it! We're all done with the AGWPE configuration. Right click on the AGWPE Icon in the taskbar and select Exit.



Let's look at the Paclink Postoffice.

When we installed Paclink Postoffice it automatically installed a shortcut on the desktop. Double-click this shortcut. This will start the customization procedure.



The screenshot shows the Paclink Postoffice configuration window. It has a title bar with a 'P' icon and a close button. The window is divided into several sections:

- The location for the Paclink data files and directories:** A text box containing "C:\Program Files\Paclink\".
- Radio Callsign For This Paclink Site:** A section with two text boxes: "Callsign:" containing "KE5EXX-1" and "Password:" containing "secret_passw ord".
- E-Mail Client Access and Ports:** A section with two radio buttons: "Local Only" (selected) and "Local or LAN". Below them is a warning: "Do not change these port numbers unless you have a known conflict with another email server on the same machine (very unlikely)...". Two text boxes: "SMTP Port Number:" containing "25" and "POP3 Port Number:" containing "110".
- CMS Sites:** A section with two text boxes: "Primary CMS Site:" containing "Detroit.Winlink.org" and "Secondary CMS Site:" containing "SanDiego.Winlink.org".
- Auto Update Configuration:** A section with three radio buttons: "Never", "User Prompt @ Startup" (selected), and "Auto @ Startup".

At the bottom right, there are two buttons: "Update" and "Cancel".

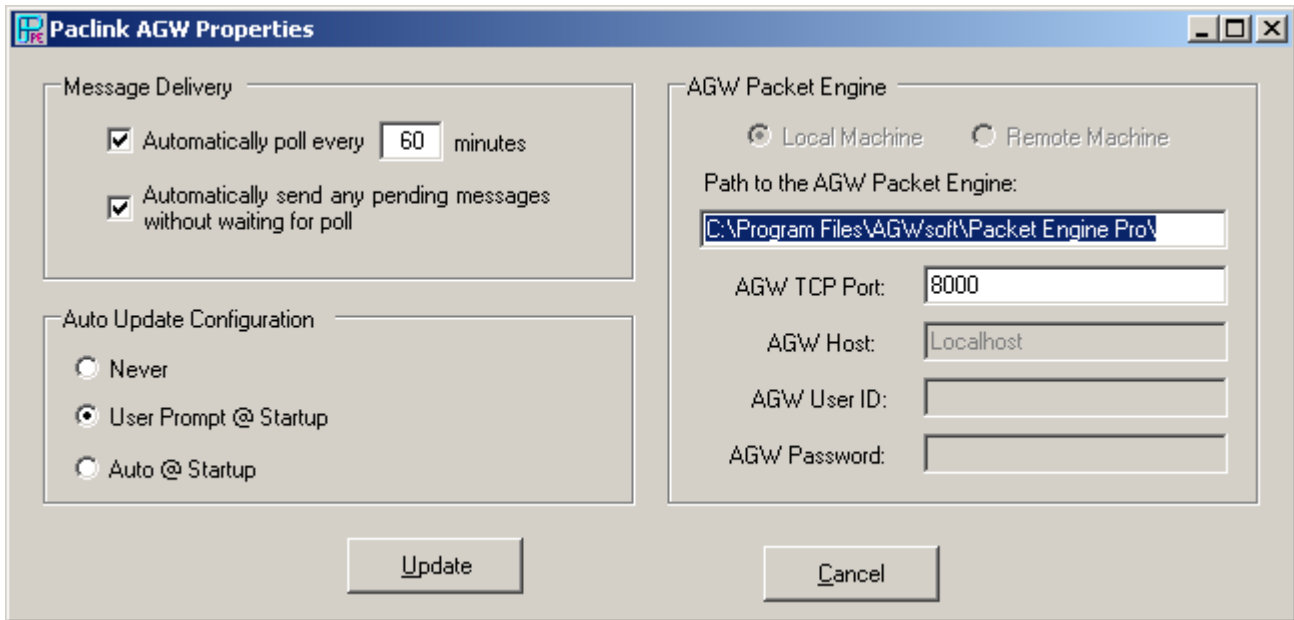
You will need to enter a your callsign and password. This will be the email address that gets setup for you at winlink.org. If you have already setup an account there, enter it here. If you haven't setup a winlink account, this program sets it up for you.

When you click on the Update button the program creates the winlink account for you and also creates a Outlook Express account for you. Talk about a time saver.

We're done with Paclink Postoffice!

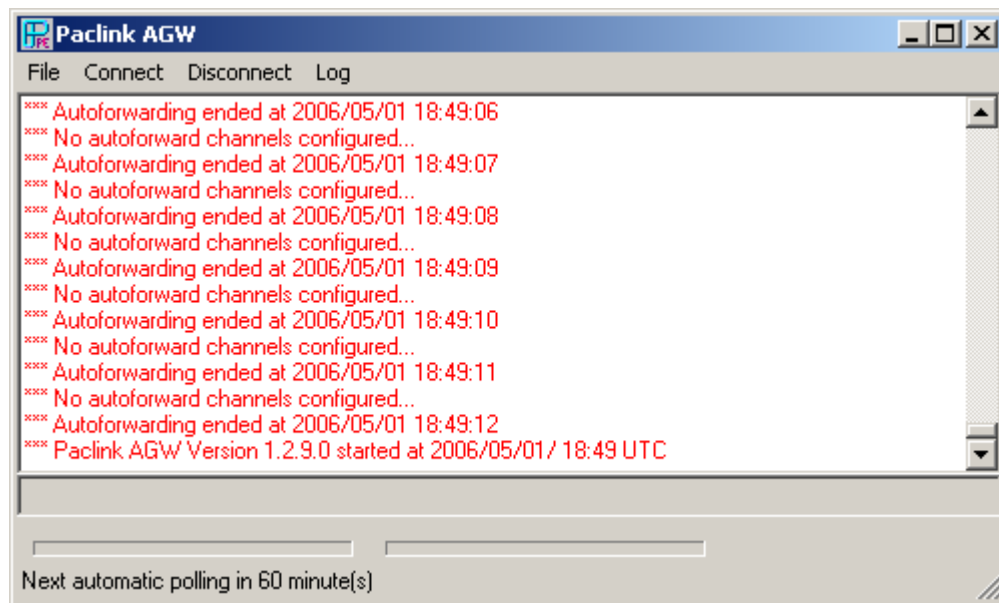
Now on to Paclink AGW...

Double-click on the Paclink AGW Shortcut on the Desktop.



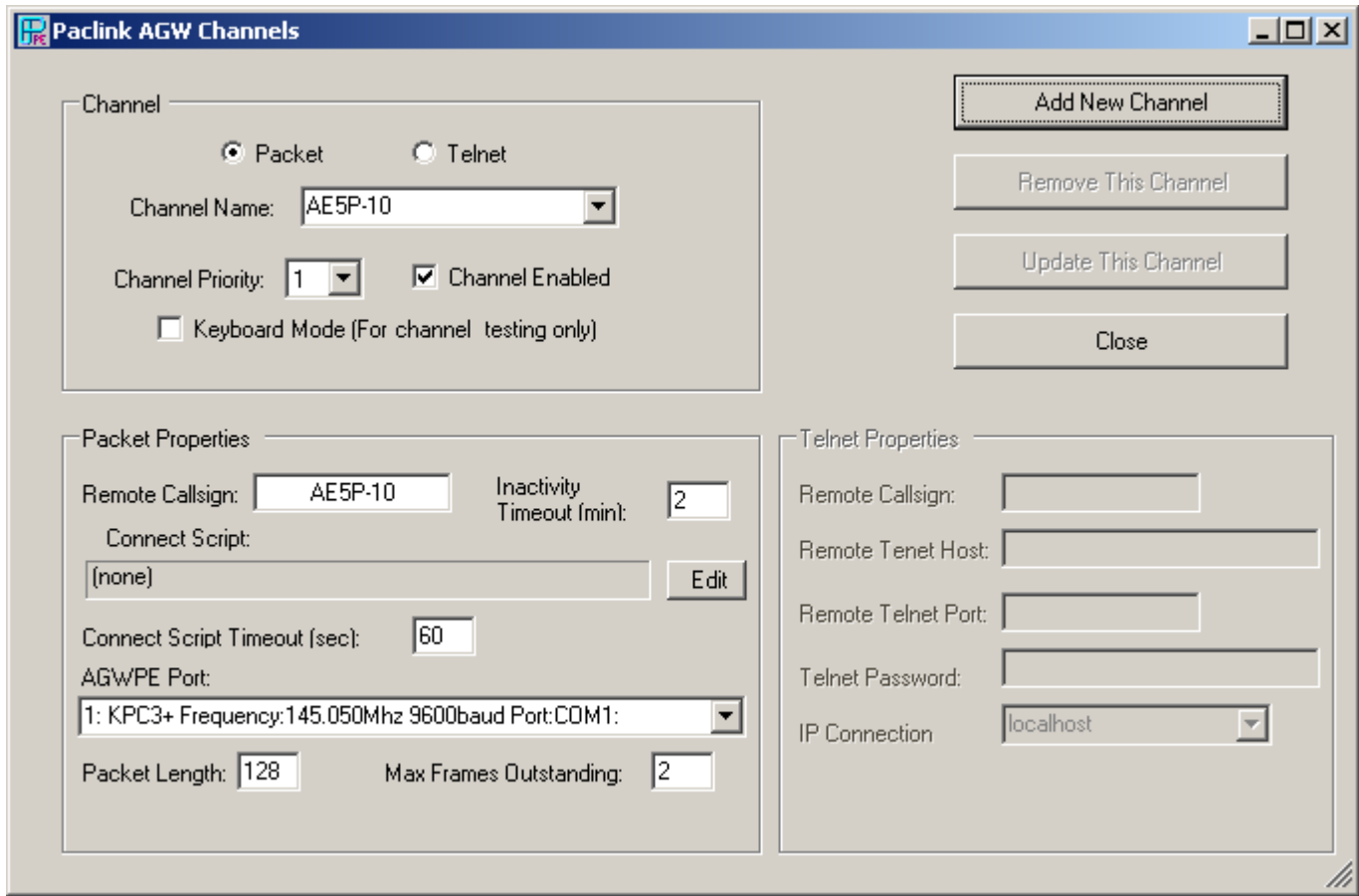
The only setting we need to change here is to point to the folder where we unzipped the AGWPE earlier. If you followed my suggestion, you can change the "Path to the AGW Packet Engine:" to C:\Program Files\AGWPE

Click on the Update Button.



You will see the red text until we create a "Channel".

Click on File -> Channels.



Click on Packet, then enter a Channel Name: (for Nacogdoches, we are using AE5P-10, for Lufkin, use W5IRP-10)

Assign the channel a priority (1 is the highest).

Enter the remote callsign (in our case, this is the same as the Channel Name...remember the KISS principle)

Select the AGWPE Port.

Click on the Add New Channel button.

You can setup multiple channels and assign different priorities. For example, from my office and house, I can reach the Nacogdoches and Lufkin stations, so I assigned AE5P-10 (Nacogdoches) as priority 1 and W5IRP-10 (Lufkin) as Priority 2. Now when the software connects, it will try AE5P-10 first, if that fails, it will try W5IRP-10.

Can you believe it? We're done.

You can test your setup by opening Outlook Express and sending a message to your regular email account. After you send the message, hit the Send and Receive button in Outlook Express.

Shortly you will notice your radio transmitting. You can monitor the status by minimizing Outlook Express and looking at the Paalink AGW Window.

That's it! We've successfully installed your software to allow you to email through your radio and TNC.

de KE5EXX
05/01/2006